

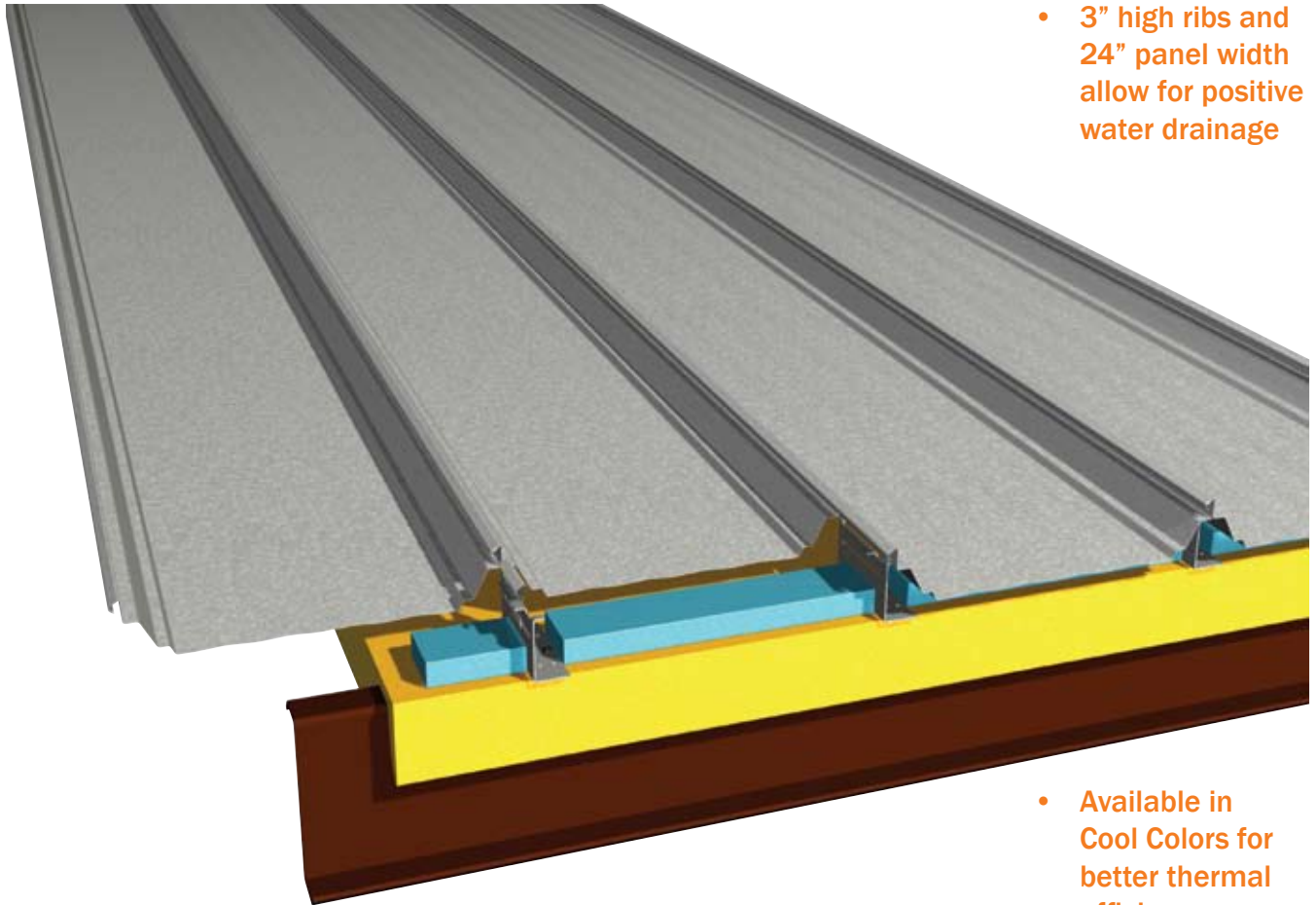
VP ROOF SYSTEMS

STYLE

SSR ROOF SYSTEM

FEATURES

INTERLOCKING PANELS PROVIDE LONG TERM WEATHERTIGHT PERFORMANCE FOR LOW-SLOPE ROOF APPLICATIONS



- 3" high ribs and 24" panel width allow for positive water drainage

- Available in Cool Colors for better thermal efficiency
- Unique ridge and panel design delivers weather-resistant results

SSR roof panels combine utility and value while meeting high-performance requirements. The panels are mechanically seamed to a full 360° interlock for superior weathertightness.



SSR PANELS COMBINE THE STRENGTH OF STEEL WITH SUPERIOR DESIGN AND LONG-LIFE FINISHES FOR YEARS OF TROUBLE-FREE PERFORMANCE

SSR SYSTEM

If you are looking for value with durability, VP's SSR Standing

Seam Roof offers economical construction and superior performance backed by an available 20-year weather-tightness warranty.

SSR panels come standard in 24-gauge steel, with 22-gauge optional, all with standard Galvalume® finish. KXL finish is available in six (6) standard colors as well as a variety of custom colors. The KXL paint system is a PVDF finish applied to the Galvalume® surface to give a long-life color that resists fading and chalking. KXL is a 1 mil nom. PVDF finish with 70% Kynar® 500 or Hylar® 5000 standard. Standard roof pitches range from 1/4":12" up to 4":12", to achieve the roof slope you desire.

SSR panels are factory-formed and field-machine seamed in place yielding a single unit membrane. The patented SSR ridge system is efficiently installed with only one weather sealed joint. The special clips used to attach SSR panels to structural members are designed to allow panel movement up to 1 inch in either direction to compensate for thermal effects.

VP's concealed clips minimize the need for through-the-roof fasteners. UL Class 90 rating for wind uplift and FM Class 1-60, 1-90 and 1-120 ratings are available for most applications.

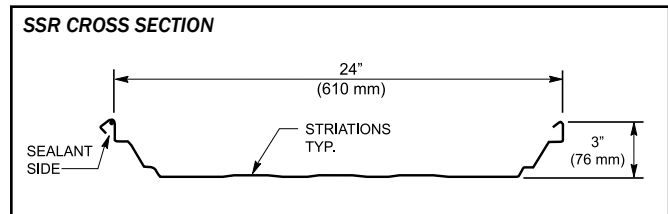
SSR panels can accommodate up to 6 inches of faced fiberglass blanket insulation for high levels of energy efficiency. Panels are available in lengths up to 41 feet, which minimizes end lap conditions. The entire roof is a single membrane allowing for quick construction and strength at a lower cost. SSR's patented ridge system and unique panel design provides a long-lasting, weather-resistant roof.

Miami-Dade County Product Control Approved by NOA No. 03-0206.13. (SSR)



FEATURES

- Economical
- Roof slopes as low as 1/4" in 12"
- 24" coverage
- Lengths up to 41'-0"
- Field-seamed weather-resistant joint
- UL 90 wind uplift rating available
- FM Class 1-60, 1-90 and 1-120 ratings available



NOTE: ALL PANELS FORMED FROM LIGHT GAUGE METAL MAY EXHIBIT WAVINESS, ALSO KNOWN AS "OIL CANNING," COMMONLY OCCURRING IN, BUT NOT RESTRICTED TO, FLAT PORTIONS OF A PANEL. THIS INHERENT CHARACTERISTIC IS NOT A DEFECT OF MATERIAL OR MANUFACTURING AND IS NOT CAUSE FOR REJECTION.



The Ultimate Building Solution
VP Buildings
3200 Players Club Circle
Memphis, TN 38125
1-800-238-3246 • www.vp.com
2063 Revised 9/06



QUALITY CERTIFICATION
METAL BUILDINGS

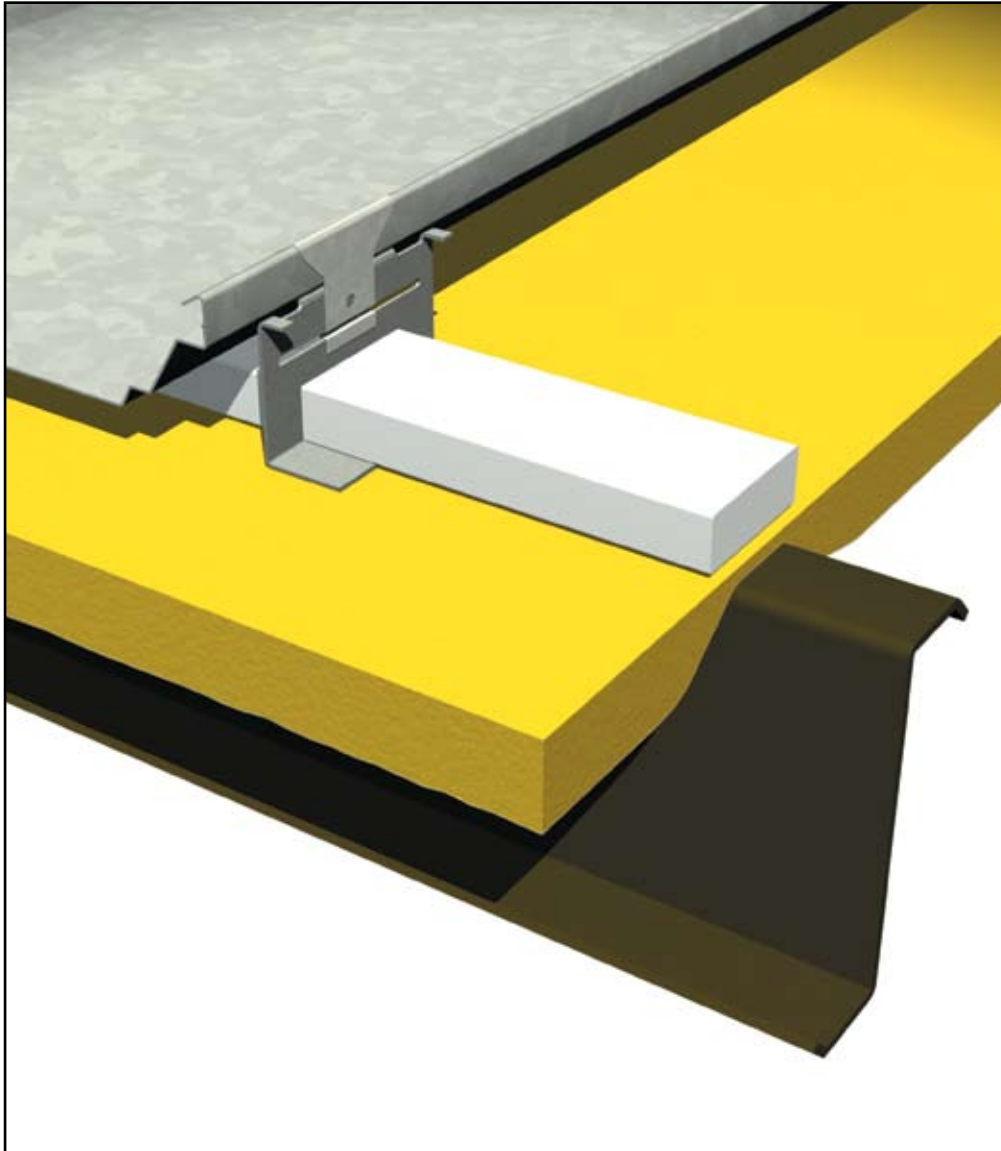
VP ROOF SYSTEMS

STYLE

THERMAL BLOCK WITH SSR ROOF

FEATURES

VP'S ECONOMICAL ALTERNATIVE FOR IMPROVING THERMAL EFFICIENCY ON BUILDINGS WITH SSR ROOF SYSTEMS



- Easy to install over purlins, joists or VP's WideBay trussed purlins
- UL and FM ratings available
- Sturdy 25 psi expanded polystyrene
- Block dimensions 3/4" x 4" x 1'-10 3/4"
- Blocks are crush resistant and won't absorb moisture

VP's Thermal Block insulation system provides an improved thermal barrier for VP's SSR standing seam roof.



THERMAL BLOCK INSULATION METHODS ASSURE INCREASED “R” VALUE IN SSR ROOFING INSTALLATION

THERMALBLOCK WITH SSR ROOF

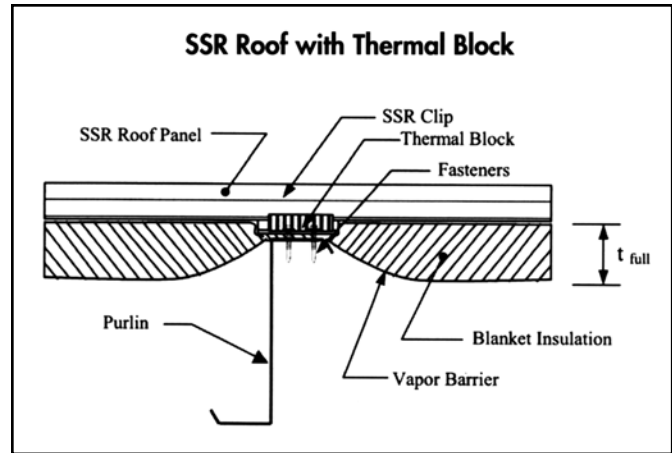
Minimizing heat escape where insulation is compressed over purlins or joists is one of the best ways to improve the thermal efficiency of a building. Better thermal efficiency means lower energy costs and lower life-cycle costs.

VP's Thermal Block provides an economical way to improve thermal performance. Thermal blocks are designed to reduce heat escape at contact areas over the roof secondary. When thermal blocks are used along with 6" rolled fiberglass insulation, there is an improvement of 25% compared to when no thermal blocks are used.

Thermal blocks are made of 25 psi polystyrene to resist compression in traffic areas on the roof. Also, the expanded polystyrene material resists moisture absorption and maintains its shape during freeze/thaw conditions.

For greater thermal efficiency, consider VP's Superblock™ System, an exclusive and proprietary insulation system designed specifically for VP's SSR standing seam roof. SuperBlock is capable of delivering an ASTM-C236 Hot Box tested, in-place R-value of 22.8 with a non-reflective facing. If using a reflective facing, the R-value can be as high as 23.5.

For information about this or any other VP product or service, contact your local authorized VP Builder.



FEATURES

- Easily installs from top side of roof
- 25 psi expanded polystyrene resists compression
- Can be used over purlins or joists
- Economical

VP Thermal Block Advantage

Insulation	System	R-Value	U-Value
6" Single layer	No Thermal Block	12.6	.079
6" Single layer	With Thermal Block	15.8	.063

Additional thermal offerings may be obtained by using reflective facing. For reflective vapor barrier surfaces, add R=0.74 to the above R-values and recalculate the U-value.



The Ultimate Building Solution
 VP Buildings
 3200 Players Club Circle
 Memphis, TN 38125
 1-800-238-3246 • www.vp.com
 2037 Revised 1/06



QUALITY CERTIFICATION
 METAL BUILDINGS

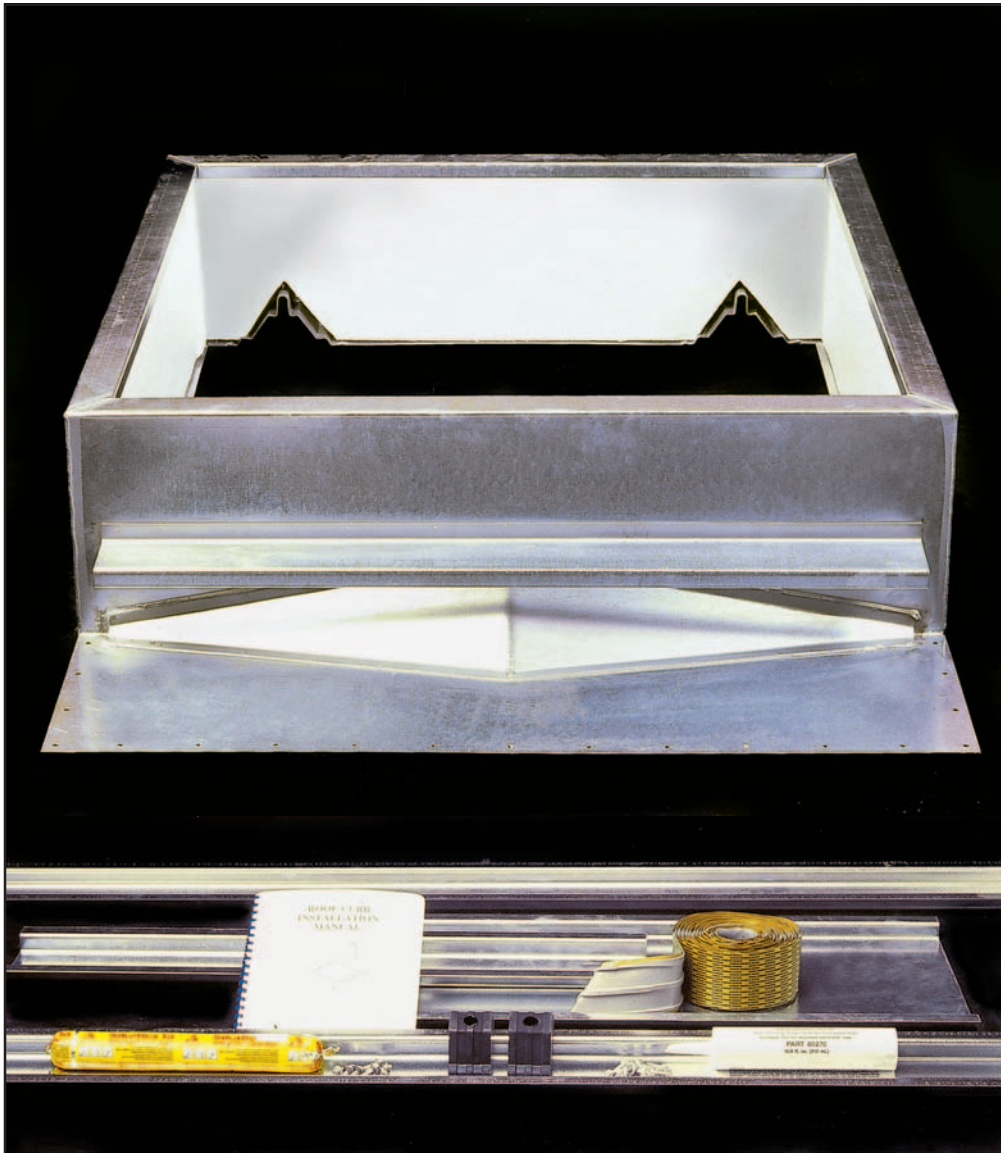
VP ROOF SYSTEMS

STYLE

CFR ROOF CURB FOR SSR

FEATURES

HIGH QUALITY ROOF CURB SPECIFICALLY
DESIGNED AND MANUFACTURED FOR USE
WITH VP SSR ROOF



- Concealed curb to roof fasteners.
- Mitered corners and seams joined by weathertight and airtight welds.
- Splash protection provided by factory installed diverter.
- Specially designed cricket assures water diversion around the curb.
- Curb includes all components for installation on VP's SSR Roof.

The design of the VP CFR Roof Curb has been refined and proven with the installation of thousands of units on VP SSR roofs.

BURGLAR BARS, SKYLIGHTS, VENTS AND ROOF HATCHES ARE AVAILABLE OPTIONS FOR VP'S CFR ROOF CURB

CFR ROOF CURB FOR SSR ROOF

VP's SSR™ Standing Seam Roof system has earned the reputation as one of the finest roof systems available today. When penetrations are necessary, the material used must be equal in quality and performance to the roof system. That is why the VP SSR Roof CFR Curb System becomes an extremely critical component of the total roof package.

Specifically designed and manufactured to conform to VP's SSR roof, this curb design features concealed fasteners, one piece construction and ease of installation.

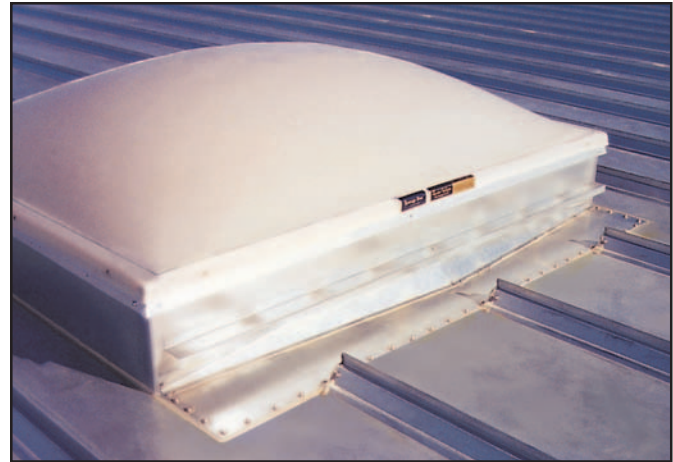
Designed by people experienced in the erection of VP's SSR roof, this roof curb has been proven by thousands of installed units.

CFR Roof Curbs are constructed of zinc coated aluminum with mitered corners and seams joined by continuous weathertight and airtight welds. Gauge is determined by the specific engineering requirement of individual units. The single piece curb unit utilizes pre-punched fastener holes for ease of installation. The curb flange is turned in on three sides, allowing for the unique feature of concealed fasteners. Inside the unit, the finished surface of the rigid insulation provides a clean, light-reflecting surface.

Standard features include minimum height of 8", rigid insulation, prefabricated sub-framing and a built-in diverter. The cricket is factory formed to assure maximum performance. Custom sizes and heights are available. Each unit comes complete with installation accessories consisting of fasteners, mastic, caulking, hard rubber plugs and installation manual.

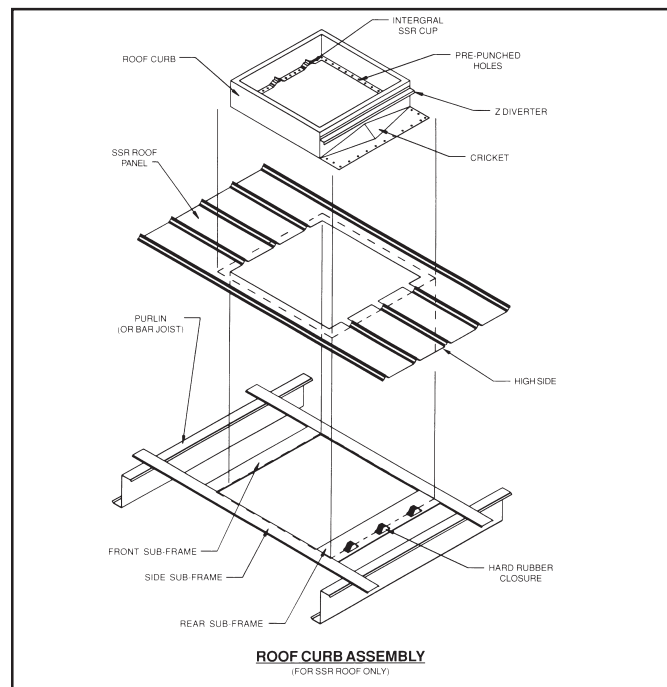
Optional features include burglar bars, skylights, vents and roof hatches, plus cross supports for duct drops.

NOTE: ALL PANELS FORMED FROM LIGHT GAUGE METAL MAY EXHIBIT WAVINESS, ALSO KNOWN AS "OIL CANNING," COMMONLY OCCURRING IN, BUT NOT RESTRICTED TO, FLAT PORTIONS OF A PANEL. THIS INHERENT CHARACTERISTIC IS NOT A DEFECT OF MATERIAL OR MANUFACTURING AND IS NOT CAUSE FOR REJECTION.



FEATURES

- Specifically designed for VP's SSR roof
- Excellent for retrofit and HVAC units
- Prefabricated sub-frame
- Complete installation kit includes mastic, caulking and fasteners
- One-piece construction
- Concealed fasteners



The Ultimate Building Solution
 VP Buildings
 3200 Players Club Circle
 Memphis, TN 38125
 1-800-238-3246 • www.vp.com
 2079 Revised 12/05



QUALITY CERTIFICATION
 METAL BUILDINGS

VP ROOF SYSTEMS

STYLE

SSR SEAMED RIDGE

FEATURES

DIE-FORMED FOR AN EXACT FIT, THIS SEAMED RIDGE DELIVERS A CONSISTENT LOOK AND SEAL FOR AN SSR ROOF SYSTEM



- Field seamed ridge cap
- Factory installed rib closures
- Eliminates nesting or intrusion by vermin and insects at the ridge
- Factory formed ridge covers help maintain panel modularity
- Die formed for precise fit

VP Buildings' exclusive SSR Seamed Ridge is designed to match the integrity and performance of SSR Roof Panel.



SSR SEAMED RIDGE IS MANUFACTURED EXCLUSIVELY FOR VP BUILDINGS' SSR ROOF

SSR SEAMED RIDGE

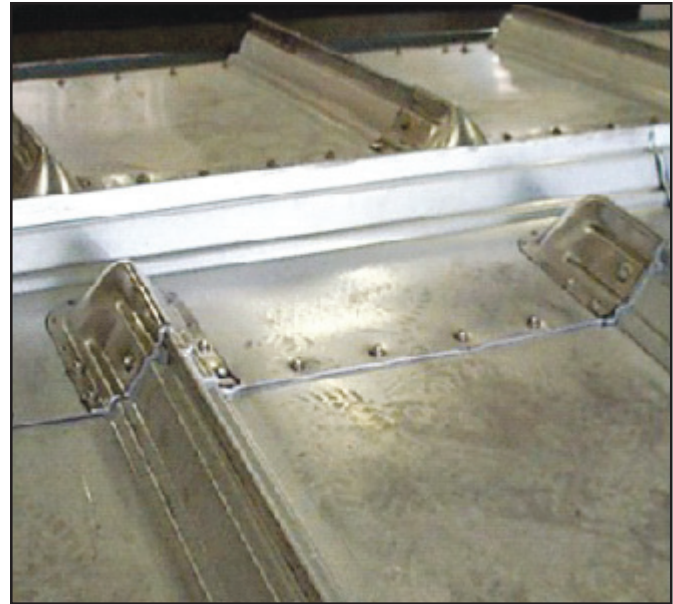
The perfect way to cap off a VP Buildings SSR roof. This unique design allows for a consistent look and efficient closure and protection at the apex of the roof. Using a male and female ridge panel and a ridge end mastic, this assembly is easy to install.

The VP SSR Seamed Ridge is available in either standard 24 gauge or optional 22 gauge zinc aluminum coated galvanized steel. Ridge caps can be powder coated to match VP standard roof colors.

Installation requires ridge cover attachment, mastic and fastener panels, endlap splice of ridge panels, ridge to rake transition, and ridge expansion joint.

VP Buildings' patented seamer tool seams the ridge to a weathertight 360° seal. The seal also prevents nesting or intrusion by unwanted pests and birds.

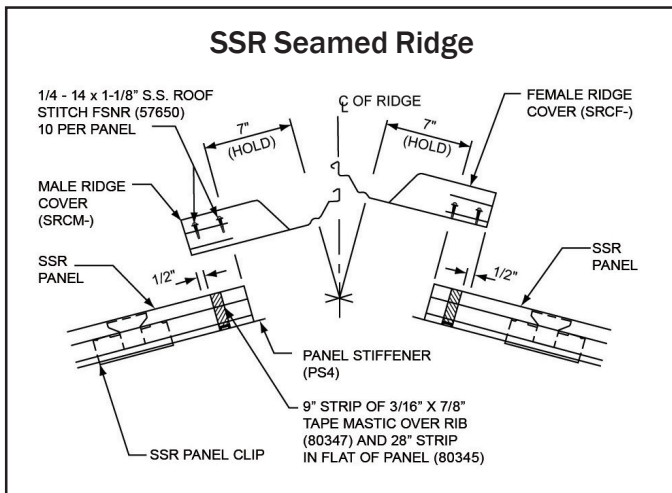
The ridge sits 3 inches above the flat roof panels and the die formed bull nose ridge covers provide weathertight closure for the roof panels and help maintain panel modularity during installation.



FEATURES

- Economical
- 22 & 24 gauge steel
- Die formed for exact fit
- Available in standard VP roof colors
- 360° Pittsburgh seam

NOTE: ALL PANELS FORMED FROM LIGHT GAUGE METAL MAY EXHIBIT WAVINESS, ALSO KNOWN AS "OIL CANNING," COMMONLY OCCURRING IN, BUT NOT RESTRICTED TO, FLAT PORTIONS OF A PANEL. THIS INHERENT CHARACTERISTIC IS NOT A DEFECT OF MATERIAL OR MANUFACTURING AND IS NOT CAUSE FOR REJECTION.



The Ultimate Building Solution
VP Buildings
3200 Players Club Circle
Memphis, TN 38125
1-800-238-3246 • www.vp.com
2064 Revised 9/06



QUALITY CERTIFICATION
METAL BUILDINGS