

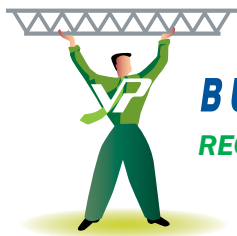
VP WALL SYSTEMS

STYLE	FEATURES
THERMALCLAD PLANKED PANEL	AN ATTRACTIVE AND DURABLE SANDWICH PANEL IDEAL FOR EXTERIOR WALLS OR INTERIOR PARTITION APPLICATIONS



- Matching profile design on exterior and interior panels
- 42" panel width
- Lengths up to 40'
- Available in four thicknesses

VP's Planked ThermalClad panel is an energy-efficient panel with matching profiles on both exterior and interior sides.



BUILD SMART BUILD GREEN WITH VP
RECYCLED STEEL COOL PAINTS ENERGY SAVING INSULATION



MATCHING PANEL FACINGS ENSURE SYMMETRY FROM OUTSIDE TO INSIDE, OR ROOM TO ROOM IN PARTITION APPLICATIONS

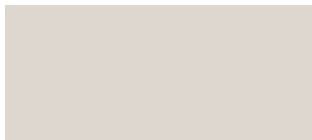
THERMALCLAD PLANKED INSULATED WALL PANEL

VP's ThermalClad Planked Panels feature sturdy 26 gauge steel panels on both exterior and interior faces. The exterior panel is factory-formed with vertical lines to present an attractive and durable finished wall ideally suited for most commercial and industrial buildings. The embossed G-90 steel exterior panels are coated in 70% fluoropolymer finish to provide long term, low maintenance performance. Interior panels are planked design 26 gauge steel, factory coated with a white polyester finish. USDA approved finishes available. Exterior color options include:

Polar White -USDA Approved



Sandstone



Aegean Blue



Forest Green*



Desert Beige



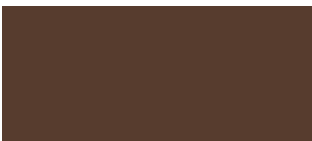
Regal Gray



Brick Red*



Sculpture Bronze*



ThermalClad exterior finishes meet Kynar 500 and Hylar 5000 specifications. Kynar 500® is a registered trademark of Arkema.

Hylar 5000® is a registered trademark of Solvay Solexis.

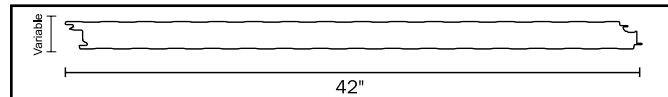
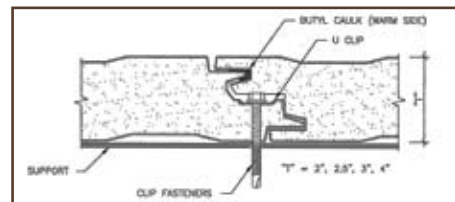
*Sculpture Bronze, Brick Red and Forest Green are not recommended for exterior color on cooler and freezer buildings.

Note: Tests and approvals include FM 4880 and FM 4881, Dade County Air and Water infiltration tests AAMA 501, ASTM E 283 and E 331.



FEATURES

- Fastener head and clip concealed in side joint
- Offset double tongue-and-groove side joint
- Lengths from 8'-40' available
- R-values to 34.9 available



Note: All panels formed from light gauge metal may exhibit waviness, also known as "Oil Canning," commonly occurring in, but not restricted to, flat portions of a panel. This inherent characteristic is not a defect of material or manufacturing and is not cause for rejection.

Insulation Effectiveness

Panel Insulation Thickness	Operating Temperature	Thermal Conductivity (K-Factor)	Heat Transfer Coefficient (U-Value)	Thermal Resistance (R-Value)
2"	+40° F	.1146	.0573	17.45
2.5"	+40° F	.1146	.0459	21.81
3"	+40° F	.1146	.0382	26.18
4"	+40° F	.1146	.0287	34.9



2044 Revised 5/09

Varco Pruden Buildings, 3200 Players Club Circle, Memphis, TN 38125

©2009 BlueScope Buildings North America, Inc. All rights reserved.

Varco Pruden Buildings® is a division of BlueScope Buildings North America, Inc.

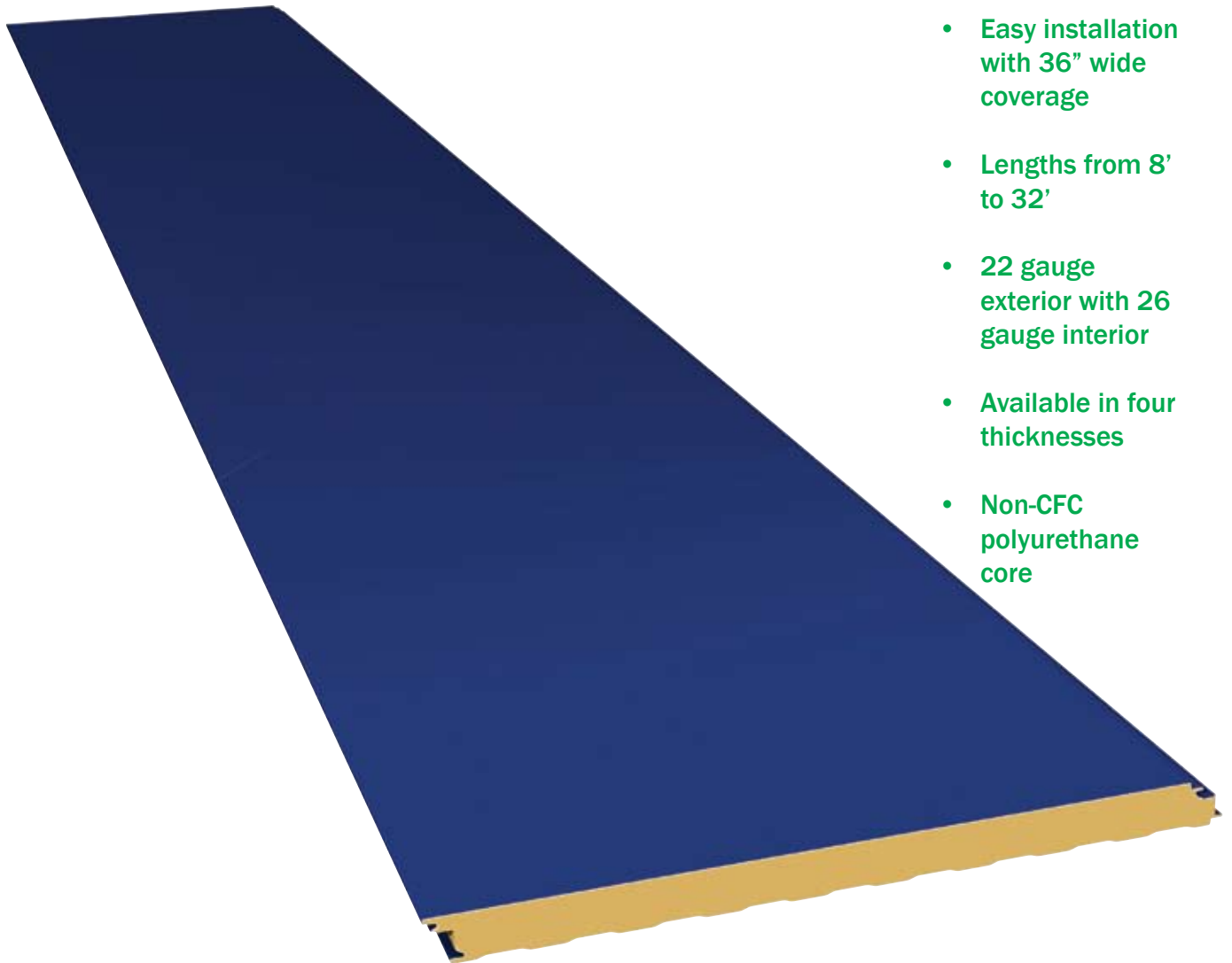
Find your independent Authorized VP Builder at www.vp.com

Varco Pruden meets IBC manufacturing; is a member of the USGBC and has Energy Star rated products. Many of our processes are certified by Canadian A-660 and approved by Factory Mutual.



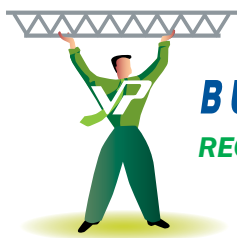
VP WALL SYSTEMS

STYLE	FEATURES
THERMALCLAD ARCHITECTURAL PANEL	HIGH PERFORMANCE, FLAT PROFILE INSULATED PANEL, IDEAL FOR ARCHITECTURAL PROJECTS REQUIRING THERMAL PROTECTION



- Easy installation with 36" wide coverage
- Lengths from 8' to 32'
- 22 gauge exterior with 26 gauge interior
- Available in four thicknesses
- Non-CFC polyurethane core

VP's ThermalClad Architectural panel is made for applications requiring flat profile insulated panels with concealed fasteners.



BUILD SMART BUILD GREEN WITH VP
RECYCLED STEEL COOL PAINTS ENERGY SAVING INSULATION



VP BUILDINGS' THERMALCLAD FLAT INSULATED WALL PANELS USE CONCEALED FASTENERS TO PROVIDE A SMOOTH ARCHITECTURAL PROFILE

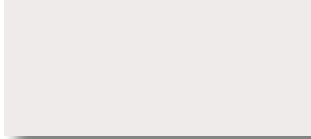
THERMALCLAD

ARCHITECTURAL PANEL

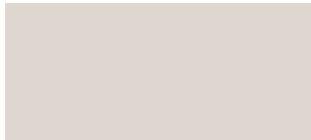
VP's Architectural wall panels are designed for high profile projects that require a flush exterior wall finish. This panel is 36" wide and available in four thicknesses, each with an insulated core made from foamed in-place, blister free, non-CFC polyurethane. Maximum panel length is 32'-0".

The exterior panels are made from extra heavy-duty 22 gauge, G-90 steel, coated with a 70% PVDF fluoropolymer finish. Interior panels are planked style 26 gauge steel, factory coated with a white polyester finish. USDA approved finishes available. Exterior color options include:

Polar White -USDA Approved



Sandstone



Aegean Blue



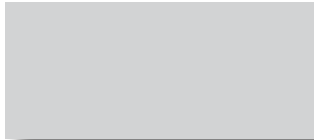
Forest Green*



Desert Beige



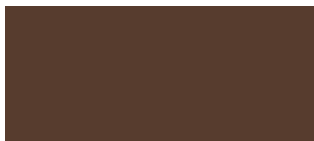
Regal Gray



Brick Red*



Sculpture Bronze*



ThermalClad exterior finishes meet Kynar 500 and Hylar 5000 specifications. Kynar 500® is a registered trademark of Arkema.

Hylar 5000® is a registered trademark of Solvay Solexis.

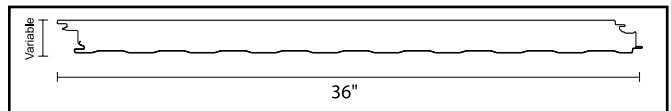
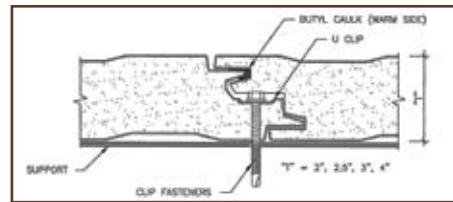
*Sculpture Bronze, Brick Red and Forest Green are not recommended for exterior color on cooler and freezer buildings.

Note: Tests and approvals include FM 4880 and FM 4881, Dade County Air and Water infiltration tests AAMA 501, ASTM E 283 and E 331.



FEATURES

- Offset double tongue-and-groove side joint
- Lengths from 8'-32' and 36" coverage
- Fastener head and clip concealed in side joint
- R-values up to R-34.9 available



Note: All panels formed from light gauge metal may exhibit waviness, also known as "Oil Canning," commonly occurring in, but not restricted to, flat portions of a panel. This inherent characteristic is not a defect of material or manufacturing and is not cause for rejection.

Insulation Effectiveness

Panel Insulation Thickness	Operating Temperature	Thermal Conductivity (K-Factor)	Heat Transfer Coefficient (U-Value)	Thermal Resistance (R-Value)
2"	+40° F	.1146	.0573	17.45
2.5"	+40° F	.1146	.0459	21.81
3"	+40° F	.1146	.0382	26.18
4"	+40° F	.1146	.0287	34.9



2045 Revised 5/09
 Varco Pruden Buildings, 3200 Players Club Circle, Memphis, TN 38125
 ©2009 BlueScope Buildings North America, Inc. All rights reserved.
 Varco Pruden Buildings® is a division of BlueScope Buildings North America, Inc.
 Find your independent Authorized VP Builder at www.vp.com
 Varco Pruden meets IBC manufacturing; is a member of the USGBC and has Energy Star rated products. Many of our processes are certified by Canadian A-660 and approved by Factory Mutual.



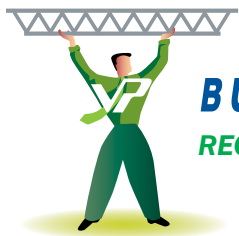
VP WALL SYSTEMS

STYLE	FEATURES
THERMALCLAD REVEAL PANEL	STURDY, INSULATED SANDWICH PANEL IDEAL FOR MOST COMMERCIAL & INDUSTRIAL APPLICATIONS



- Embossed facing for architectural appeal
- Available in 42" panel width
- Non-CFC Polyurethane Core
- Offset tongue-and-groove joints at sidelap provide positive fastening
- Available in four thicknesses

VP's Reveal insulated panel combines great design with thermal performance. Ideal for dry goods storage and other controlled environments where temperature control and insulation values are critical.



BUILD SMART BUILD GREEN WITH VP
RECYCLED STEEL COOL PAINTS ENERGY SAVING INSULATION

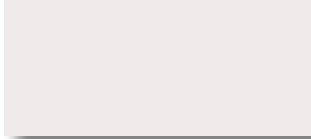


THERMALCLAD PANELS ARE IDEAL FOR MOST COMMERCIAL AND INDUSTRIAL PROJECTS AS WELL AS COLD STORAGE FACILITIES.

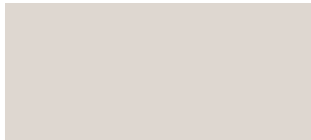
THERMALCLAD REVEAL INSULATED WALL PANEL

VP's Reveal Panels feature sturdy 26 gauge steel panels on both exterior and interior faces. The exterior panel is factory-formed with bold vertical lines to present an attractive and durable finished wall, ideally suited for most commercial and industrial buildings. The embossed G-90 steel exterior panels are coated in 70% fluoropolymer finish to provide long term, low maintenance performance. Interior panels are planked design 26 gauge steel, factory coated with a white polyester finish. USDA approved finishes available. Exterior color options include:

Polar White -USDA Approved



Sandstone



Aegean Blue



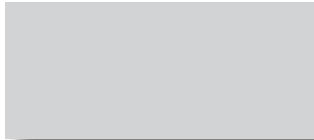
Forest Green*



Desert Beige



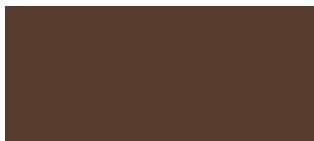
Regal Gray



Brick Red*



Sculpture Bronze*



ThermalClad exterior finishes meet Kynar 500 and Hylar 5000 specifications. Kynar 500® is a registered trademark of Arkema.

Hylar 5000® is a registered trademark of Solvay Solexis.

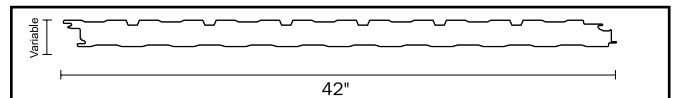
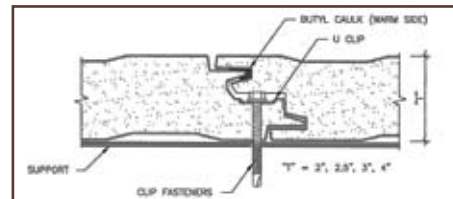
*Sculpture Bronze, Brick Red and Forest Green are not recommended for exterior color on cooler and freezer buildings.

Note: Tests and approvals include FM 4880 and FM 4881, Dade County Air and Water infiltration tests AAMA 501, ASTM E 283 and E 331.



FEATURES

- Offset double tongue-and-groove side joint
- R-values up to R-34.9 available
- Clips and fasteners concealed in side joint
- Standard lengths from 8'-40'



Note: All panels formed from light gauge metal may exhibit waviness, also known as "Oil Canning," commonly occurring in, but not restricted to, flat portions of a panel. This inherent characteristic is not a defect of material or manufacturing and is not cause for rejection.

Insulation Effectiveness

Panel Insulation Thickness	Operating Temperature	Thermal Conductivity (K-Factor)	Heat Transfer Coefficient (U-Value)	Thermal Resistance (R-Value)
2"	+40° F	.1146	.0573	17.45
2.5"	+40° F	.1146	.0459	21.81
3"	+40° F	.1146	.0382	26.18
4"	+40° F	.1146	.0287	34.9



2042 Revised 5/09
 Varco Pruden Buildings, 3200 Players Club Circle, Memphis, TN 38125
 ©2009 BlueScope Buildings North America, Inc. All rights reserved.
 Varco Pruden Buildings® is a division of BlueScope Buildings North America, Inc.
 Find your independent Authorized VP Builder at www.vp.com
 Varco Pruden meets IBC manufacturing; is a member of the USGBC and has Energy Star rated products. Many of our processes are certified by Canadian A-660 and approved by Factory Mutual.

