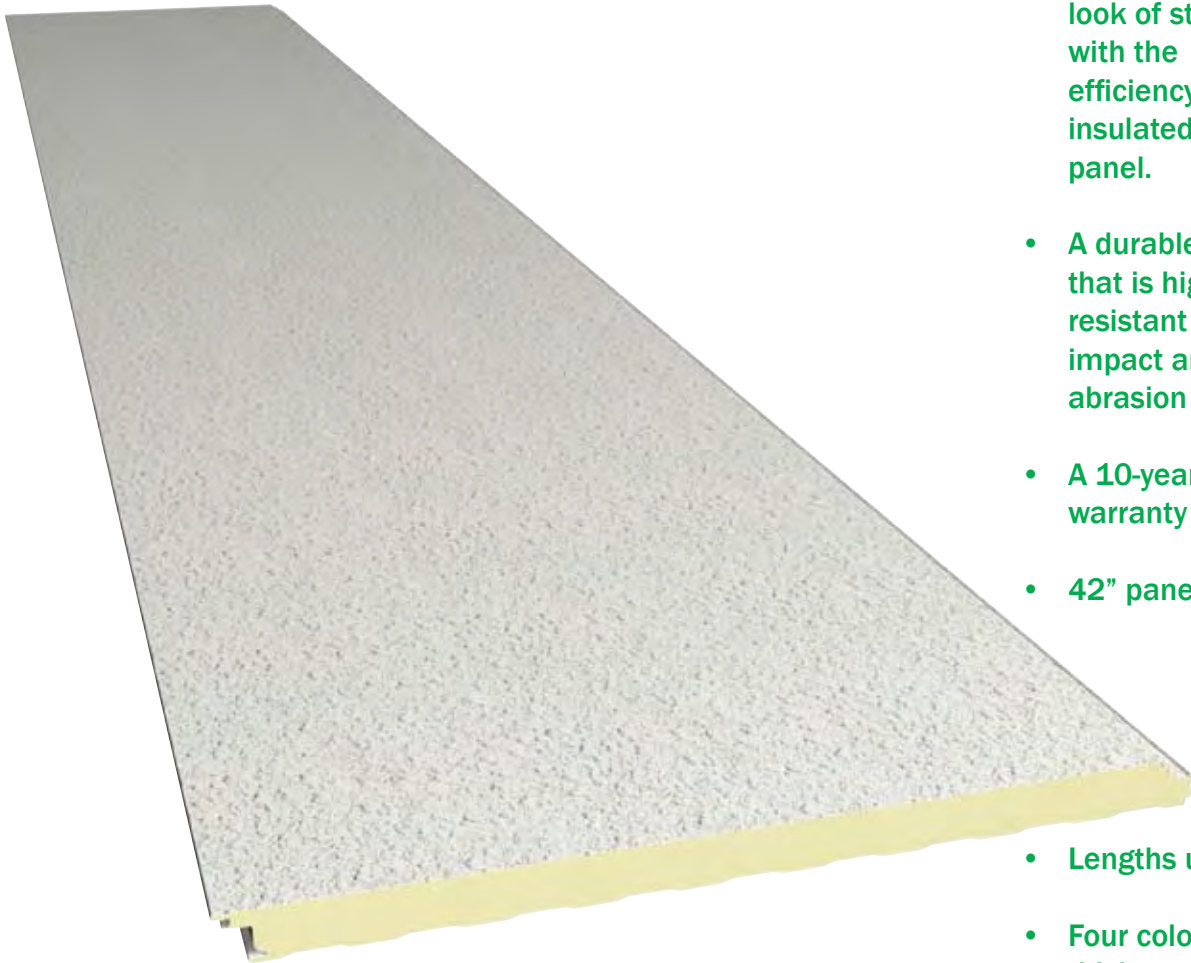


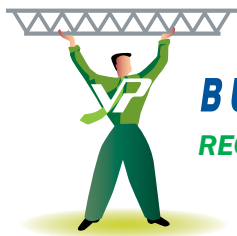
VP WALL SYSTEMS

STYLE	FEATURES
TUFF-WALL INSULATED PANEL	A 42 INCH WIDE, DOUBLE-WALLED FOAM INSULATED PANEL WITH AN ATTRACTIVE AND DURABLE TEXTURED FINISH



- The masonry look of stucco with the efficiency of an insulated metal panel.
- A durable finish that is highly resistant to impact and abrasion
- A 10-year limited warranty
- 42" panel width
- Lengths up to 40'
- Four colors, four thicknesses

Tuff-Wall's unique design features a textured finish on top of double-walled, foam insulation that offers superior thermal performance.



BUILD SMART BUILD GREEN WITH VP
RECYCLED STEEL COOL PAINTS ENERGY SAVING INSULATION



AN ATTRACTIVE WALL PANEL WITH STUCCO APPEARANCE WITH OUTSTANDING THERMAL PERFORMANCE

TUFF-WALL™

VP's Tuff-Wall™ is an exceptionally attractive stucco-like insulated wall panel that provides a highly-desired look. The panel's textured surface has a hard aggregated fiber reinforced polymer coating created with the factory applied Tuff-Cote finish system. Tuff-Cote™ finish offers an extremely durable, impact and abrasion resistant coating that withstands severe weather conditions.

Unlike field-applied finishes that are vulnerable to damp or cold weather, Tuff-Wall™ panels can be erected in virtually any weather condition. As an added value, Tuff-Wall™ panels can function as the finished interior walls in many applications. Maximum panel length is 40'-0".

Exterior metal walls are a sturdy 26 gauge steel, surrounding an insulated core of foamed in-place, blister free, non-CFC polyurethane. Interior panels are 26 gauge steel, factory coated with a white polyester finish. USDA approved finishes available. Four exterior color options include:

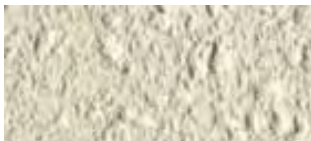
Stucco White



Medium Beige



Light Stone



Light Gray

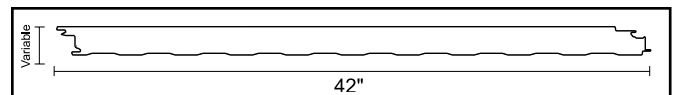
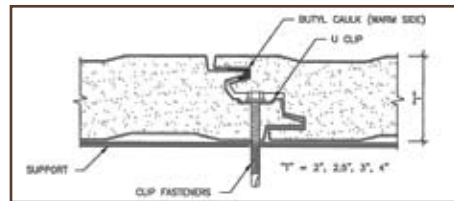


Note: Tests and approvals include FM 4880 and FM 4881, Dade County Air and Water infiltration tests AAMA 501, ASTM E 283 and E 331.



FEATURES

- The masonry look of stucco with the efficiency of an insulated metal panel.
- The field-tested and proven Tuff-Cote™ technology
- A durable finish that is highly resistant to impact and abrasion
- A 10-year limited warranty



Note: All panels formed from light gauge metal may exhibit waviness, also known as "Oil Canning," commonly occurring in, but not restricted to, flat portions of a panel. This inherent characteristic is not a defect of material or manufacturing and is not cause for rejection.

Insulation Effectiveness

Panel Insulation Thickness	Operating Temperature	Thermal Conductivity (K-Factor)	Heat Transfer Coefficient (U-Value)	Thermal Resistance (R-Value)
2"	+40° F	.1146	.0573	17.45
2.5"	+40° F	.1146	.0459	21.81
3"	+40° F	.1146	.0382	26.18
4"	+40° F	.1146	.0287	34.9



2046 Revised 5/09
 Varco Pruden Buildings, 3200 Players Club Circle, Memphis, TN 38125
 ©2009 BlueScope Buildings North America, Inc. All rights reserved.
 Varco Pruden Buildings® is a division of BlueScope Buildings North America, Inc.
 Find your independent Authorized VP Builder at www.vp.com
 Varco Pruden meets IBC manufacturing; is a member of the USGBC and has Energy Star rated products. Many of our processes are certified by Canadian A-660 and approved by Factory Mutual.

